

Who We Are

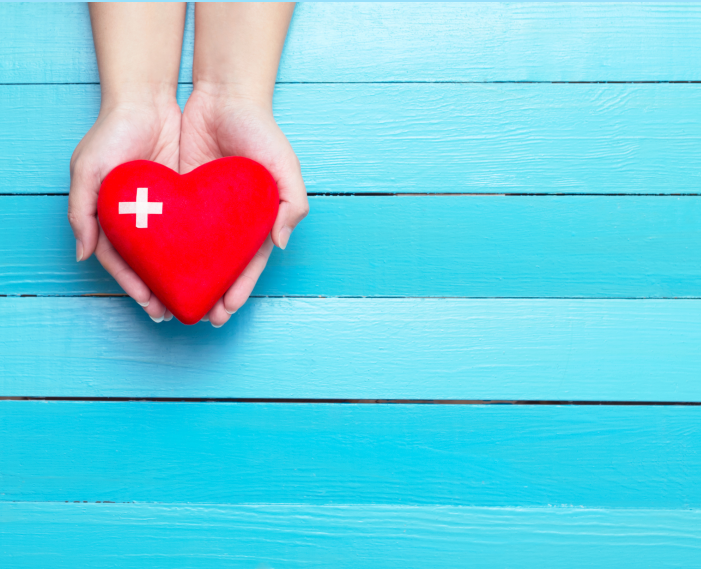
Mission: To provide progressive and inclusive health care, empowering individuals to lead fuller lives.

Vision: All individuals are accorded full rights and status as members of the community.




**We are offering
Onsite and
Telehealth!**

**INTENSIVE
OUTPATIENT
PROGRAM (IOP)**



Get In Touch With Us

 info@cerhawaii.org

 1110 University Ave. #411, #408
Honolulu, HI 96826

 www.cerhawaii.com



**HOURS:
MON - FRI 12 P.M. - 3 P.M.**

**Community
Empowerment
Resources (CER)**

Providing progressive and inclusive health care, empowering individuals to lead fuller lives.



REFERRALS:

Stephanie Tsai - 808-940-2069
Integrated Clinic Manager

General Clinic - 808-942-7884

We are a locally operated, private, and publicly funded 501(c)(3) nonprofit agency based in Honolulu, Hawaii. CER is widely known for its dedicated efforts to provide inclusive care to people who are diagnosed with substance use and mental health disorders. CER promotes independence and stability and aims to assist clients and provide the utmost care, while upholding the agencies Motto: "CER is a Team of Mindfully Respectful Professionals."

The Groups:

- **Psychoeducation**
- **Relapse Prevention**
- **Social Support/Process**
- **Recovery Skills & Development**
- **Cognitive Behavioral Therapy**



Facilitators:

Our facilitators are highly experienced professionals in the mental health field, collectively possessing over 40 years of expertise. They utilize their specialized skillsets to provide culturally sensitive, community-based care. Drawing upon diverse approaches and techniques from various aspects of substance and mental healthcare, each facilitator offers a distinct perspective aimed at serving the community in a meaningful way.

What is an Intensive Outpatient Program (IOP)?

- **It is a program designed to treat substance use disorders and co-occurring mental health disorders.**
- **“Outpatient” means that at IOP, clients go home each night. This is unlike inpatient treatment, where you would live in the treatment center.**

How it Works

Clients will be assigned specific groups depending upon the assessment recommendations, treatment plan goals, and where they fall in the stages of change.
(9 - 15 hours per week)

Refreshments provided during general lunchtimes.

Career Opportunities -
View our open positions and apply at www.cerhawaii.org